

## ISUZU ROM AUTO

Sos Bucuresti Ploiesti nr 40, Sector 1, Bucuresti  
Nr. inreg. la Reg. Com: J40/14481/27.08.2008  
C.I.F: RO24386589; Capital social: 10.000 lei  
IBAN: RO45 CECE B320 30RO N322 2542  
Banca: CEC Bank, Suc. Victoriei  
Tel/Fax: 021/305.72.80; E-mail:office@isuzu-romania.ro

Catre,

**GUVERNUL ROMANIEI**

**AUTORITATEA NATIONALA PENTRU PROTECTIA CONSUMATORILOR**

Serviciul de Consiliere Tehnica Produse Nealimentare  
Bdul Aviatorilor 72, Sector 1, Bucuresti

*Ion David*  
*07.06.2024*  
Nr. iesire *724*  
Ziua *05* Luna *06* Anul *2024*

A.N.P.C. - REGISTRATURĂ	
INTRARE	Nr. <i>5202</i>
IEȘIRE	
Ziua <i>05</i>	Luna <i>06</i> Anul <i>2024</i>

Stimate Domnule Director,

Avand in vedere faptul ca producatorul Isuzu Motors International Operations ( Thailand ) Co., Ltd. ( IMIOT ) se afla intr-un continuu proces de supraveghere si verificare a calitatii autovehiculelor vandute in toata lumea, inclusiv in Romania si datorita faptului ca Isuzu Rom Auto SRL, in calitate de distribuitor oficial al modelului Isuzu D-Max in Romania, doreste sa fie transparenta in relatia cu Autoritatea Nationala pentru Protectia Consumatorului, precum si in conformitate cu legislatia nationala si europeana, dorim sa va informam ca:

Isuzu Motors International Operations Thailand a decis lansarea unei campanii de rechemare in service SCP-2405-01, pentru confirmare si actualizare soft modul de control al motorului (ECM), cu care este echipat modelul RT Isuzu D-Max fabricat intre 2017 si 2020. Va informam ca toata operatiunea dureaza aproximativ jumatate de ora.

Isuzu Rom Auto SRL a lansat aceasta campanie in data de 15.05.2024 pentru autoturismele afectate vandute pe teritoriul Romaniei. Cu aceasta ocazie va comunicam ca aceasta campanie se desfasoara pe costurile IMIOT fara a fi implicati financiar clientii. Acestia vor fi informati prin scrisori electronice sa se prezinte la cel mai apropiat service autorizat Isuzu D-Max pentru efectuarea campaniei.

Anexam la prezenta : Notificarea oficiala catre ANPC, buletinele de service cu procedurile de verificare, lista dealerilor autorizati Isuzu D-Max in Romania, lista celor 90 de VIN-uri afectate.

Pentru orice detaliu suplimentar va stam la dispozitie la tel: 021 3125005; fax: 021 3057280; e-mail: [ion.david@isuzu-romania.ro](mailto:ion.david@isuzu-romania.ro).

Cu stima,

Director Post-Vanzari Isuzu Rom Auto SRL

Ion David





Isuzu Motors International Operations (Thailand) Co., Ltd.  
1010 Shinawatra Tower III, 24th -25th Floor, Vibhavadi Rangsit  
Road, Chatuchak, Bangkok 10900  
Tel: +66 (2) 966-2626  
Email: limit\_service@imit.isuzu.com

Număr de referință: SCP-2405-01  
Data: 15 mai 2024

**Campanie rechemare**

**Subiect: Cerere de campanie de rechemare în vederea confirmării și actualizării software-ului modului de control al motorului (ECM), model RZ4E Euro6b**

Isuzu Motors International Operations (Thailand) Co., Ltd. a decis să desfășoare o campanie de rechemare în service pentru acest subiect. Prin urmare, vă rugăm să vă ocupați de această problemă în ceea ce privește vehiculele afectate din țara dumneavoastră.

### 1. VEHICULE AFECTATE

Pentru vehiculele afectate din țara dumneavoastră, consultați tabelul de mai jos.

Model	<input checked="" type="checkbox"/> TF <input type="checkbox"/> UC
An fabricație	2017MY - 2020MY ( Model RT )
Intervalul VIN	Vă rugăm să consultați lista VIN anexată.

### 2. INFORMATII SERVICE

#### 2-1. Fond:

Isuzu a lansat o actualizare a software-ului ECM pentru soluționarea problemei de ezitare a motorului RZ4E Euro6b la începutul anului 2021 (TSI IMIT-2102-01). Cu toate acestea, este posibil ca vehiculele (cu transmisie automată) care au fost actualizate la această versiune de software să aibă un control LNT (Lean NOx Trap) inadecvat. Rezultatul fiind că limitele de emisii nu sunt respectate în anumite condiții de rulare.

#### 2-2. Acțiune corectivă:

Vă rugăm să confirmați numărul actual al componentei ECM. Dacă se potrivește cu numărul de componentă afectată (consultați secțiunea 2-4), actualizați software-ul ECM pentru a corecta cu numărul componentei de contramăsură. Numărul componentei ECM în vigoare din stoc trebuie eliminat.

#### 2-3. Procedură de lucru:

Vă rugăm să consultați procedura de lucru din anexă.

#### 2-4. Informații număr plese ECM

Nume componente	Nr. componente afectate	Nr. componente contramăsură
MODULE ASM;ENG CONT	8977908800	7552124900
MODULE ASM;ENG CONT	8977908810	7552124910
MODULE ASM;ENG CONT	8977908820	7552124920
MODULE ASM;ENG CONT	8977908830	7552124930
MODULE ASM;ENG CONT	8977908890	7552124940
MODULE ASM;ENG CONT	8977908900	7552124850

#### 2-5. Codul de operațiune și timpul de operațiune

Vă rugăm să imputați cheltuielile prin sistemul de garanție. Acest cod de operațiune este inclus în alocația de timp administrativ.

Cod operațiune	Descriere operațiune	Ore de lucru
W9098	Verificați numărul actual al componentei ECM	0.2
Add A	Actualizare ECM	0.2

### 3. Raport de cheltuieli

Toate costurile de manoperă aferente acestei campanii de rechemare în service vor fi suportate de Isuzu Motors International Operations (Thailand) Co., Ltd.

Pentru un contract de garanție valabil, vă rugăm să urmați procedura obișnuită de solicitare a garanției.

La depunerea cererilor de garanție pentru această campanie de rechemare în service, nu este necesară depunerea unei „Cereri de autorizare”.

Cererile de despăgubire pot fi depuse în mod normal, urmând procedura descrisă în SPPM.

Vă rugăm să rețineți că nu se acceptă cererile de înlocuire a pieselor, a materialelor dealerului, de remorcare, de reparații subînchiriate și de duplicat.

Notă: Pentru a rambursa numerele de componente ECM afectate aflate în stoc, vă rugăm să eliminați aceste componente și să trimiteți o notă de debit către Isuzu Motors International (Thailand) Co., Ltd. cu următoarele dovezi.

- Factura de achiziție a pieselor
- Raportul de eliminare a pieselor sau o fotografie ca dovadă

#### Anexe

1. Lista VIN-urilor afectate
2. Fișa de instrucțiuni de lucru

Cu deosebită considerație,

Satoshi Matsumoto  
General Manager  
Service Department

Isuzu Motors International Operations (Thailand) Co., Ltd.



Lista VIN vehicule afectate campanie SCP-2405-01

No	MODEL NAME	CAB	VIN	ENGINE	ENG NO	COUNTRY	DRIVE	T/M	EPD	LINE OFF	TYPE
1	TFS87JDE-TL	CREW	MPATFS87JH	RZ4E-TCX	PV9665	ROMANIA	4x4	A/T	20161223	20161223	I
2	TFS87JDE-TL	CREW	MPATFS87JH	RZ4E-TCX	PV9664	ROMANIA	4x4	A/T	20161226	20161223	I
3	TFS87JDE-TL	CREW	MPATFS87JH	RZ4E-TCX	RB3946	ROMANIA	4x4	A/T	20170211	20170213	I
4	TFS87JDE-TL	CREW	MPATFS87JH	RZ4E-TCX	RB9888	ROMANIA	4x4	A/T	20170215	20170216	I
5	TFS87JDE-TL	CREW	MPATFS87JH	RZ4E-TCX	R89879	ROMANIA	4x4	A/T	20170218	20170220	I
6	TFS87JDE-TL	CREW	MPATFS87JH	RZ4E-TCX	RD3977	ROMANIA	4x4	A/T	20170227	20170227	I
7	TFS87JDE-TL	CREW	MPATFS87JH	RZ4E-TCX	RD3976	ROMANIA	4x4	A/T	20170227	20170227	I
8	TFS87JDE-TL	CREW	MPATFS87JH	RZ4E-TCX	RD8869	ROMANIA	4x4	A/T	20170304	20170304	I
9	TFS87JDE-TL	CREW	MPATFS87JH	RZ4E-TCX	RD8868	ROMANIA	4x4	A/T	20170306	20170306	I
10	TFS87JDE-TL	CREW	MPATFS87JH	RZ4E-TCX	RH0264	ROMANIA	4x4	A/T	20170424	20170424	I
11	TFS87JDE-TL	CREW	MPATFS87JH	RZ4E-TCX	RH0871	ROMANIA	4x4	A/T	20170426	20170425	I
12	TFS87JDE-TL	CREW	MPATFS87JH	RZ4E-TCX	RH0869	ROMANIA	4x4	A/T	20170426	20170425	I
13	TFS87JDE-TL	CREW	MPATFS87JH	RZ4E-TCX	RK3979	ROMANIA	4x4	A/T	20170522	20170522	I
14	TFS87JDE-TL	CREW	MPATFS87JH	RZ4E-TCX	RK6277	ROMANIA	4x4	A/T	20170523	20170524	I
15	TFS87JDE-TL	CREW	MPATFS87JH	RZ4E-TCX	RK6274	ROMANIA	4x4	A/T	20170524	20170524	I
16	TFS87JDE-TL	CREW	MPATFS87JH	RZ4E-TCX	RK6281	ROMANIA	4x4	A/T	20170602	20170602	I
17	TFS87JDE-TL	CREW	MPATFS87JH	RZ4E-TCX	RK6288	ROMANIA	4x4	A/T	20170606	20170606	I
18	TFS87JDE-TL	CREW	MPATFS87JJ	RZ4E-TCX	RR4019	ROMANIA	4x4	A/T	20170722	20170722	I
19	TFS87JDE-TL	CREW	MPATFS87JJ	RZ4E-TCX	RR4023	ROMANIA	4x4	A/T	20170725	20170725	I
20	TFS87JDE-TL	CREW	MPATFS87JJ	RZ4E-TCX	RT0695	ROMANIA	4x4	A/T	20170829	20170829	I
21	TFS87JDE-TL	CREW	MPATFS87JJ	RZ4E-TCX	RT8241	ROMANIA	4x4	A/T	20170831	20170831	I
22	TFS87JDE-TL	CREW	MPATFS87JJ	RZ4E-TCX	RU5559	ROMANIA	4x4	A/T	20170909	20170909	I
23	TFS87JDE-TL	CREW	MPATFS87JJ	RZ4E-TCX	RV3925	ROMANIA	4x4	A/T	20170919	20170919	I
24	TFS87JDE-TL	CREW	MPATFS87JJ	RZ4E-TCX	RV3938	ROMANIA	4x4	A/T	20170920	20170920	I
25	TFS87JDE-TL	CREW	MPATFS87JJ	RZ4E-TCX	RV9385	ROMANIA	4x4	A/T	20171002	20171003	I
26	TFS87JDE-TL	CREW	MPATFS87JJ	RZ4E-TCX	RV9387	ROMANIA	4x4	A/T	20171002	20171003	I
27	TFS87JDE-TL	CREW	MPATFS87JJ	RZ4E-TCX	RV9389	ROMANIA	4x4	A/T	20171002	20171003	I
28	TFS87JDE-TL	CREW	MPATFS87JJ	RZ4E-TCX	RV4461	ROMANIA	4x4	A/T	20171002	20171003	I
29	TFS87JDE-TL	CREW	MPATFS87JJ	RZ4E-TCX	RV4451	ROMANIA	4x4	A/T	20171002	20171002	I
30	TFS87JDE-TL	CREW	MPATFS87JJ	RZ4E-TCX	RV9386	ROMANIA	4x4	A/T	20171002	20171002	I
31	TFS87JDE-TL	CREW	MPATFS87JJ	RZ4E-TCX	RZ4819	ROMANIA	4x4	A/T	20171118	20171118	I
32	TFS87JDE-TL	CREW	MPATFS87JJ	RZ4E-TCX	RZ4823	ROMANIA	4x4	A/T	20171122	20171122	I
33	TFS87JDE-TL	CREW	MPATFS87JJ	RZ4E-TCX	SB8491	ROMANIA	4x4	A/T	20171218	20171219	I
34	TFS87JDE-TL	CREW	MPATFS87JJ	RZ4E-TCX	SD0117	ROMANIA	4x4	A/T	20171221	20171221	I
35	TFS87JDE-TL	CREW	MPATFS87JJ	RZ4E-TCX	SE8721	ROMANIA	4x4	A/T	20180113	20180115	I
36	TFS87JDE-TL	CREW	MPATFS87JJ	RZ4E-TCX	SE8729	ROMANIA	4x4	A/T	20180120	20180122	I
37	TFS87JDE-TL	CREW	MPATFS87JJ	RZ4E-TCX	SH3829	ROMANIA	4x4	A/T	20180215	20180215	I
38	TFS87JDE-TL	CREW	MPATFS87JJ	RZ4E-TCX	SK7294	ROMANIA	4x4	A/T	20180320	20180320	I
39	TFS87JDE-TL	CREW	MPATFS87JJ	RZ4E-TCX	SP5025	ROMANIA	4x4	A/T	20180427	20180427	I
40	TFS87JDE-TL	CREW	MPATFS87JJ	RZ4E-TCX	SP5026	ROMANIA	4x4	A/T	20180428	20180428	I
41	TFS87JDE-TL	CREW	MPATFS87JJ	RZ4E-TCX	SR6851	ROMANIA	4x4	A/T	20180522	20180522	I
42	TFS87JDE-TL	CREW	MPATFS87JJ	RZ4E-TCX	SR8424	ROMANIA	4x4	A/T	20180524	20180524	I
43	TFS87JDE-TL	CREW	MPATFS87JJ	RZ4E-TCX	SS0893	ROMANIA	4x4	A/T	20180526	20180526	I
44	TFS87JDE-TL	CREW	MPATFS87JJ	RZ4E-TCX	SS0894	ROMANIA	4x4	A/T	20180530	20180530	I
45	TFS87JDE-TL	CREW	MPATFS87JJ	RZ4E-TCX	SS0891	ROMANIA	4x4	A/T	20180530	20180530	I
46	TFS87JDE-TL	CREW	MPATFS87JJ	RZ4E-TCX	SS0888	ROMANIA	4x4	A/T	20180530	20180530	I
47	TFS87JDE-TL	CREW	MPATFS87JJ	RZ4E-TCX	SS0892	ROMANIA	4x4	A/T	20180530	20180530	I
48	TFS87JDE-TL	CREW	MPATFS87JJ	RZ4E-TCX	SS0889	ROMANIA	4x4	A/T	20180530	20180530	I
49	TFS87JDE-TL	CREW	MPATFS87JJ	RZ4E-TCX	SS0882	ROMANIA	4x4	A/T	20180530	20180530	I
50	TFS87JDE-TL	CREW	MPATFS87JK	RZ4E-TCX	SV9188	ROMANIA	4x4	A/T	20180720	20180720	I
51	TFS87JDE-TL	CREW	MPATFS87JK	RZ4E-TCX	SY7762	ROMANIA	4x4	A/T	20180822	20180822	I
52	TFS87JDE-TL	CREW	MPATFS87JK	RZ4E-TCX	SZ6418	ROMANIA	4x4	A/T	20180904	20180904	I

53	TFS87JDE-TL	CREW	MPATFS87JK	RZ4E-TCX	SZ6426	ROMANIA	4x4	A/T	20180904	20180904	I
54	TFS87JDE-TL	CREW	MPATFS87JK	RZ4E-TCX	TD8040	ROMANIA	4x4	A/T	20181018	20181018	I
55	TFS87JDE-TL	CREW	MPATFS87JK	RZ4E-TCX	TD9852	ROMANIA	4x4	A/T	20181019	20181019	I
56	TFS87JDE-TL	CREW	MPATFS87JK	RZ4E-TCX	TG4051	ROMANIA	4x4	A/T	20181121	20181121	I
57	TFS87JDE-TL	CREW	MPATFS87JK	RZ4E-TCX	TG0114	ROMANIA	4x4	A/T	20181123	20181123	I
58	TFS87JDE-TL	CREW	MPATFS87JK	RZ4E-TCX	TH9020	ROMANIA	4x4	A/T	20181208	20181208	I
59	TFS87JDE-TL	CREW	MPATFS87JK	RZ4E-TCX	TJ5335	ROMANIA	4x4	A/T	20181225	20181225	I
60	TFS87JDE-TL	CREW	MPATFS87JK	RZ4E-TCX	TM0546	ROMANIA	4x4	A/T	20190128	20190128	I
61	TFS87JDE-TL	CREW	MPATFS87JK	RZ4E-TCX	TL5733	ROMANIA	4x4	A/T	20190129	20190129	I
62	TFS87JDE-TL	CREW	MPATFS87JK	RZ4E-TCX	TM9892	ROMANIA	4x4	A/T	20190201	20190201	I
63	TFS87JDE-TL	CREW	MPATFS87JK	RZ4E-TCX	TP0060	ROMANIA	4x4	A/T	20190220	20190220	I
64	TFS87JDE-TL	CREW	MPATFS87JK	RZ4E-TCX	TP1821	ROMANIA	4x4	A/T	20190221	20190221	I
65	TFS87JDE-TL	CREW	MPATFS87JK	RZ4E-TCX	TR6177	ROMANIA	4x4	A/T	20190301	20190301	I
66	TFS87JDE-TL	CREW	MPATFS87JK	RZ4E-TCX	TR6782	ROMANIA	4x4	A/T	20190301	20190301	I
67	TFS87JDE-TL	CREW	MPATFS87JK	RZ4E-TCX	TS9682	ROMANIA	4x4	A/T	20190326	20190325	I
68	TFS87JDE-TL	CREW	MPATFS87JK	RZ4E-TCX	TS9688	ROMANIA	4x4	A/T	20190326	20190326	I
69	TFS87JDE-TL	CREW	MPATFS87JK	RZ4E-TCX	TT6152	ROMANIA	4x4	A/T	20190326	20190326	I
70	TFS87JDE-TL	CREW	MPATFS87JK	RZ4E-TCX	TT6148	ROMANIA	4x4	A/T	20190326	20190326	I
71	TFS87JDE-TL	CREW	MPATFS87JK	RZ4E-TCX	TW1047	ROMANIA	4x4	A/T	20190422	20190422	I
72	TFS87JDE-TL	CREW	MPATFS87JK	RZ4E-TCX	TW7117	ROMANIA	4x4	A/T	20190423	20190423	I
73	TFS87JDE-TL	CREW	MPATFS87JK	RZ4E-TCX	TW6749	ROMANIA	4x4	A/T	20190426	20190426	I
74	TFS87JDE-TL	CREW	MPATFS87JK	RZ4E-TCX	TW9351	ROMANIA	4x4	A/T	20190427	20190427	I
75	TFS87JDE-TL	CREW	MPATFS87JK	RZ4E-TCX	TY9468	ROMANIA	4x4	A/T	20190528	20190528	I
76	TFS87JDE-TL	CREW	MPATFS87JK	RZ4E-TCX	TY9471	ROMANIA	4x4	A/T	20190528	20190528	I
77	TFS87JDE-TL	CREW	MPATFS87JK	RZ4E-TCX	TZ6285	ROMANIA	4x4	A/T	20190601	20190601	I
78	TFS87JDE-TL	CREW	MPATFS87JK	RZ4E-TCX	TZ6278	ROMANIA	4x4	A/T	20190601	20190601	I
79	TFS87JDE-TL	CREW	MPATFS87JK	RZ4E-TCX	TZ7053	ROMANIA	4x4	A/T	20190601	20190601	I
80	TFS87JDE-TL	CREW	MPATFS87JK	RZ4E-TCX	TZ7049	ROMANIA	4x4	A/T	20190601	20190601	I
81	TFS87JDE-TL	CREW	MPATFS87JK	RZ4E-TCX	UB3117	ROMANIA	4x4	A/T	20190624	20190624	I
82	TFS87JDE-TL	CREW	MPATFS87JK	RZ4E-TCX	UA7131	ROMANIA	4x4	A/T	20190625	20190625	I
83	TFS87JDE-TL	CREW	MPATFS87JK	RZ4E-TCX	UA7901	ROMANIA	4x4	A/T	20190625	20190625	I
84	TFS87JDE-TL	CREW	MPATFS87JK	RZ4E-TCX	UA8452	ROMANIA	4x4	A/T	20190626	20190626	I
85	TFS87JDE-TL	CREW	MPATFS87JK	RZ4E-TCX	UA8454	ROMANIA	4x4	A/T	20190626	20190626	I
86	TFS87JDE-TL	CREW	MPATFS87JK	RZ4E-TCX	UA8451	ROMANIA	4x4	A/T	20190704	20190704	I
87	TFS87JDE-TL	CREW	MPATFS87JK	RZ4E-TCX	UA8455	ROMANIA	4x4	A/T	20190704	20190704	I
88	TFS87JDE-TL	CREW	MPATFS87JK	RZ4E-TCX	UC3524	ROMANIA	4x4	A/T	20190706	20190706	I
89	TFS87JDE-TL	CREW	MPATFS87JK	RZ4E-TCX	UC3525	ROMANIA	4x4	A/T	20190706	20190706	I
90	TFS87JDE-TL	CREW	MPATFS87JK	RZ4E-TCX	TN4635	ROMANIA	4x4	A/T	20190706	20190706	I

**Dealeri autorizati Isuzu Dmax - Romania 06.24**

Dealer				
Name	Address	Name of the Person in Charge	Telephone	Model
MIT MOTORS INTERNATIONAL SRL	Sos Bucuresti Ploiesti nr 40, 013695, Bucuresti	LIVIU TRUSCA	0040729995186	Pick Up
RODAV SRL	Strada Nationala nr 3, DN Vaslui-Iasi, Vaslui	VIOREL OUATU	0040755081308	Pick Up
LUK MOTORS SRL	Calea 6 Vanatori, Arad	CODRIN VLADU	0040752035060	Pick Up
INTERNATIONAL MOTORS GROUP	Sos Giurgiuului 48H, Jilava, Ilfov	CRISTIAN RADU	0040724234048	Pick Up
HINODE CAR EXPERT SRL	274 Gheorghe Doja Street, Targu Mures, Mures	GOTHARD Lehel	0040733105827	Pick Up
HINODE CAR EXPERT SRL	ODORHEIU SECUIESC, STR. TAMÁSI ÁRON, NR 55/A	GOTHARD Lehel	0040731499149	Pick Up
PREMIUM CARS SRL	402 Avram Iancu street ( DN1 ) Floresti, Cluj	FLORIN LUNG	0040749126116	Pick Up
AUTO KINO SRL	232 Calea Bucuresti, Brasov	OVIDIU MUNTEANU	0040745030490	Pick Up
AUTO COMO SRL	Constanta, Bulevardul Tomis 480	IONESCU GEORGE	0040762265493	Pick Up
MARSHAL SRL	249 Calea Bucuresti, Ramnicu Valcea	AUREL COSTACHE	0040730585250	Pick Up
OPEN AUTO CENTER	IASI, CALEA CHISINAULUI, NR. 45, jud. Iasi	ANDREI NEAGU	0040755983636	Pick Up

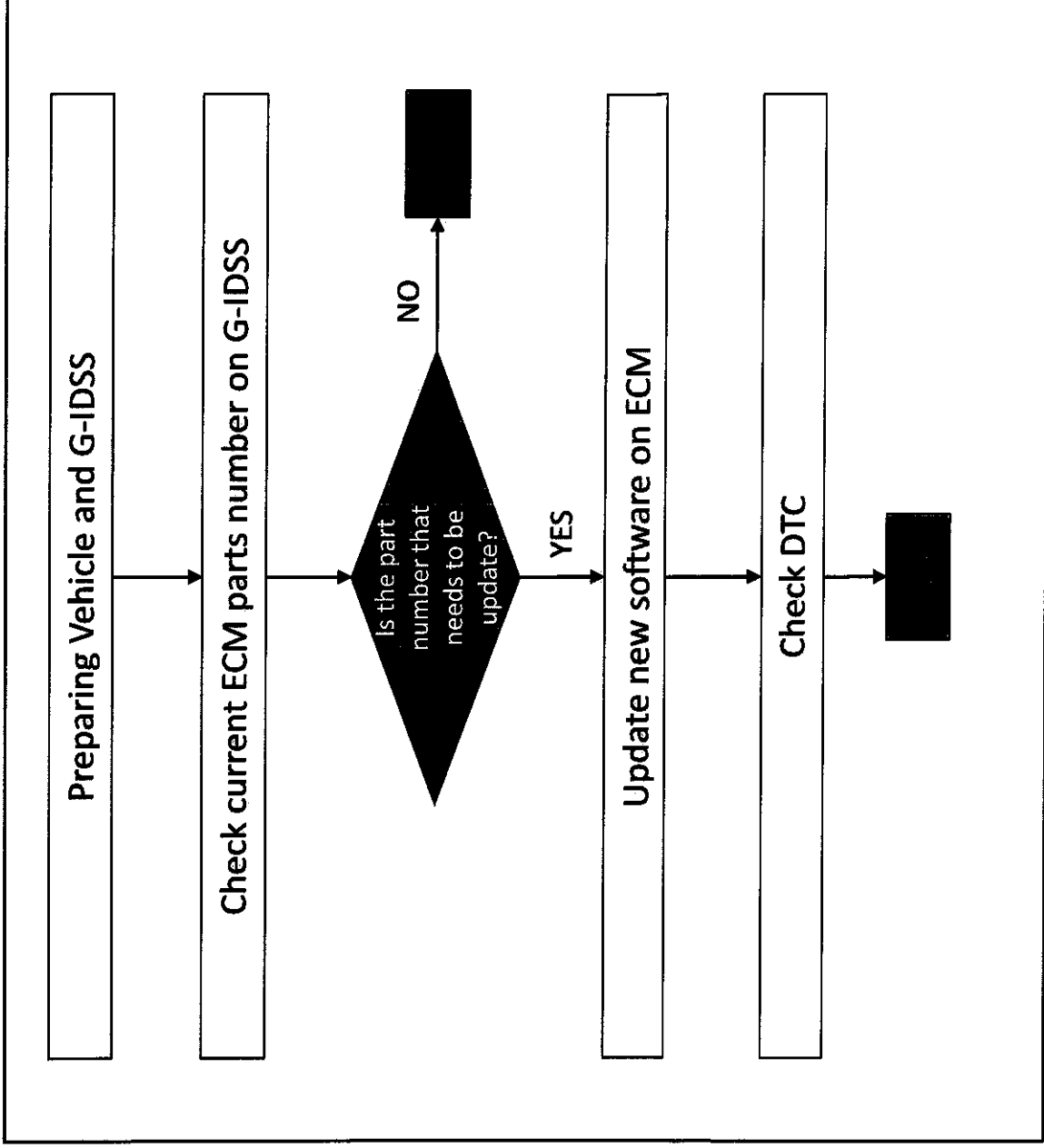
# **Work Procedure**

## **ECM software confirmation and update for RZ4E Euro6b model**

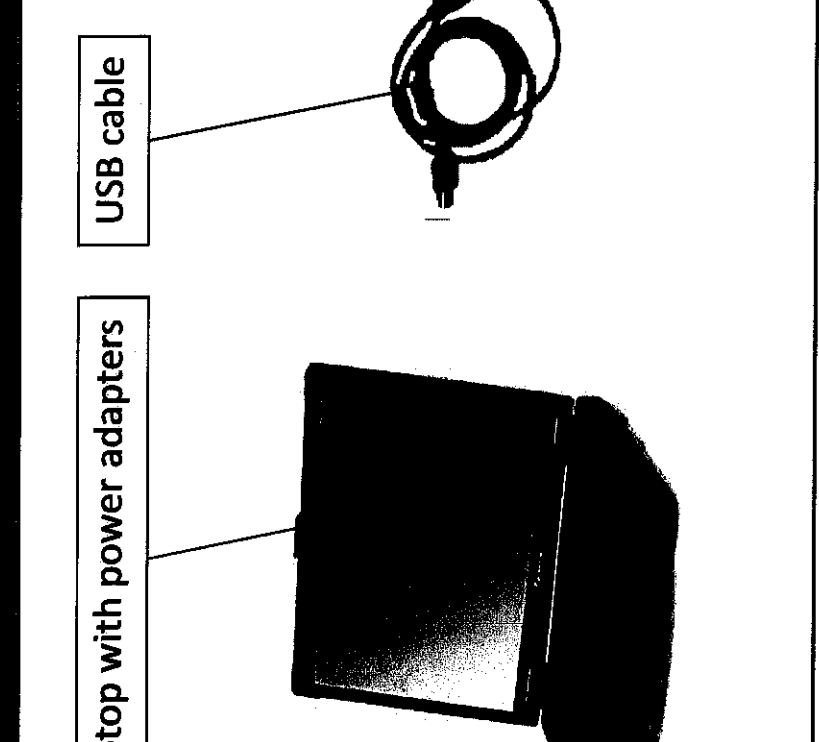
**13 May 2024**

<b>Content</b>	<b>Page</b>
- Workflow	3
- Tool	4
- Parts number and software version information	5
- Work procedure	6

# Workflow

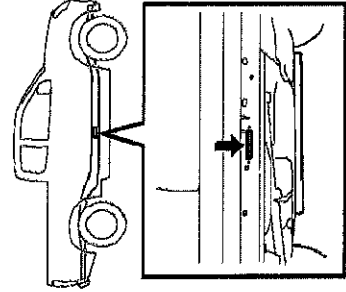
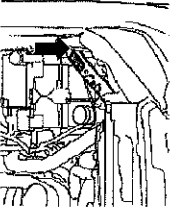
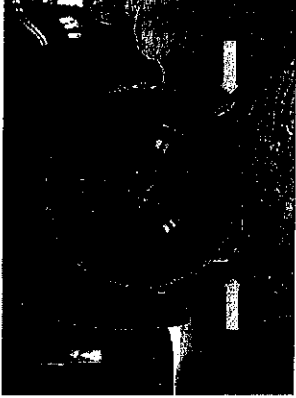
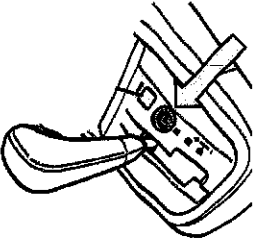
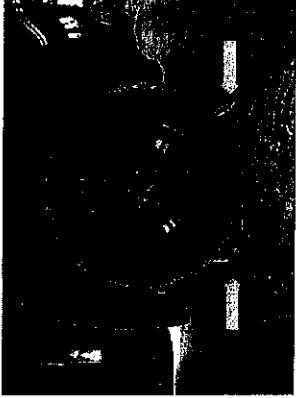
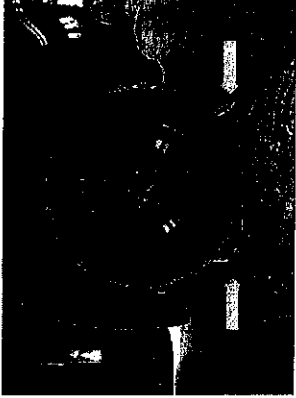



**Parts and tooling list**

Details and specifications	
Item	
1	 <p>The image shows a collection of hardware items. On the left is a laptop with its lid open. In the center is a coiled USB cable. To the right of the USB cable is a black rectangular box labeled 'IDSS Interface box'. Further right is another coiled cable labeled 'Smart cable'. On the far right is a black rectangular box labeled 'DSS'.</p> <p>Laptop with power adapters</p> <p>USB cable</p> <p>IDSS Interface box</p> <p>Smart cable</p>

Parts number and software version information

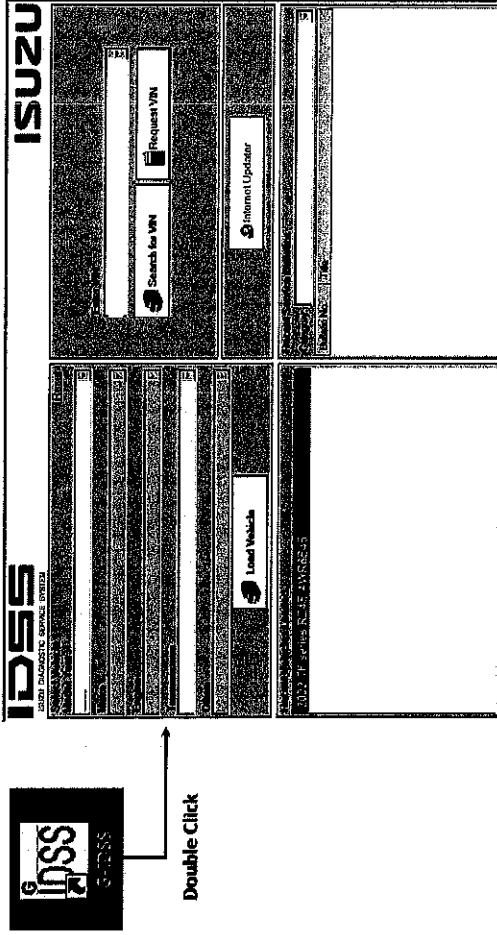
ECM	ENG	T/M		DRIVE TYPE		SUSPENSION		IMMOBI		C/CONTROL		BOS	
		MANUAL T/M	AUTOMATIC T/M	4X2	4X4	LOW RIDE	HIGH RIDE	W/IMMOBI	W/OIMMOBI	W/CRUISE CONTROL	W/O CRUISE CONTROL	W/BOS	W/O BOS
	R24E	&Y5Z	&Y6A	TFB000	TFS000	-7YC	&7YC	&7KC	-7KC	&K30	-K30	&46P30	-46P30
8977908800	7552124900	●	●	●	-	●	●	●	-	●	-	●	-
8977908810	7552124910	●	●	-	●	-	-	●	-	●	-	●	-
8977908820	7552124920	●	●	●	-	-	●	●	-	-	●	●	-
8977908830	7552124930	●	●	-	●	-	-	●	-	-	●	●	-
8977908890	7552124940	●	●	-	●	-	-	-	●	●	-	●	-
8977908900	7552124950	●	●	-	●	-	-	-	●	-	●	●	-

Preparing Vehicle and G-IDSS		Procedure	
1	 	<p>Confirm Vehicle Identification Number (VIN) and make sure if VIN of the vehicle is listed in the "Affected VIN list".</p>	<p>Park the vehicle</p> <ul style="list-style-type: none"> <li>- Check gear position(P position) and apply parking brake</li> </ul>  <p><b>Note :</b> Park the vehicle by using the tire stopper.</p>
2		<p>Park the vehicle</p> <ul style="list-style-type: none"> <li>- Check gear position(P position) and apply parking brake</li> </ul>  <p><b>Note :</b> Park the vehicle by using the tire stopper.</p>	<p>Park the vehicle</p> <ul style="list-style-type: none"> <li>- Check gear position(P position) and apply parking brake</li> </ul>  <p><b>Note :</b> Park the vehicle by using the tire stopper.</p>
3		<p>Connect G-IDSS Interface box to Laptop. Connect Smart Cable Interface box and to Vehicle.</p>	<p>Connect G-IDSS Interface box to Laptop. Connect Smart Cable Interface box and to Vehicle.</p>

Check current ECM parts number on G-IDSS

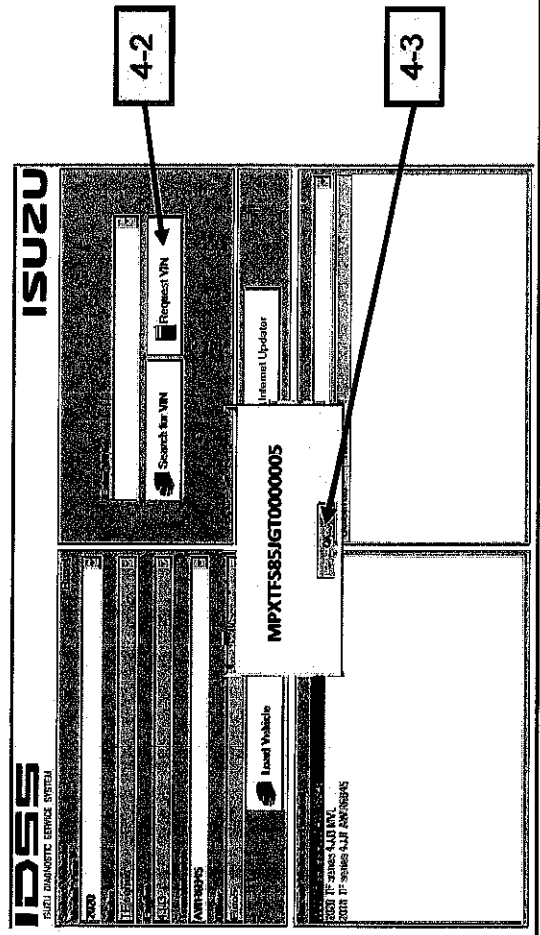
Procedure

4



4.1) Enter the G-IDSS program.

**Note :** Make sure to update the latest version of the G-IDSS software .



4.2) Click on icon "Request VIN"

4.3) Click "OK"

Check current ECM parts number on G-IDSS

Procedure

4

4-4

4-5

4-6

4-7

Module Information

End Model Part Number 897323100

Software Version Release 3

Hardware Part Number 538942330

Sys. Supplier ECU Hardware Number 808C40110

ECU Hardware Part Number 18C0388D

ECU Model Part Number 2041

Discrepancy Data Identifier 89A1F537/J17080038

Vehicle Identification Number 4485-RZ4E

Repair Shop Code 20180703

Programming Date Latched

MEC

Interchange Ability Number 11B0SCH001

ECU Address 11

4.4) Click "Diagnostics"

4.5) Click "Engine", "RZ4E"

4.6) Click "Module information"

4.7) Confirm "End Model Part number"

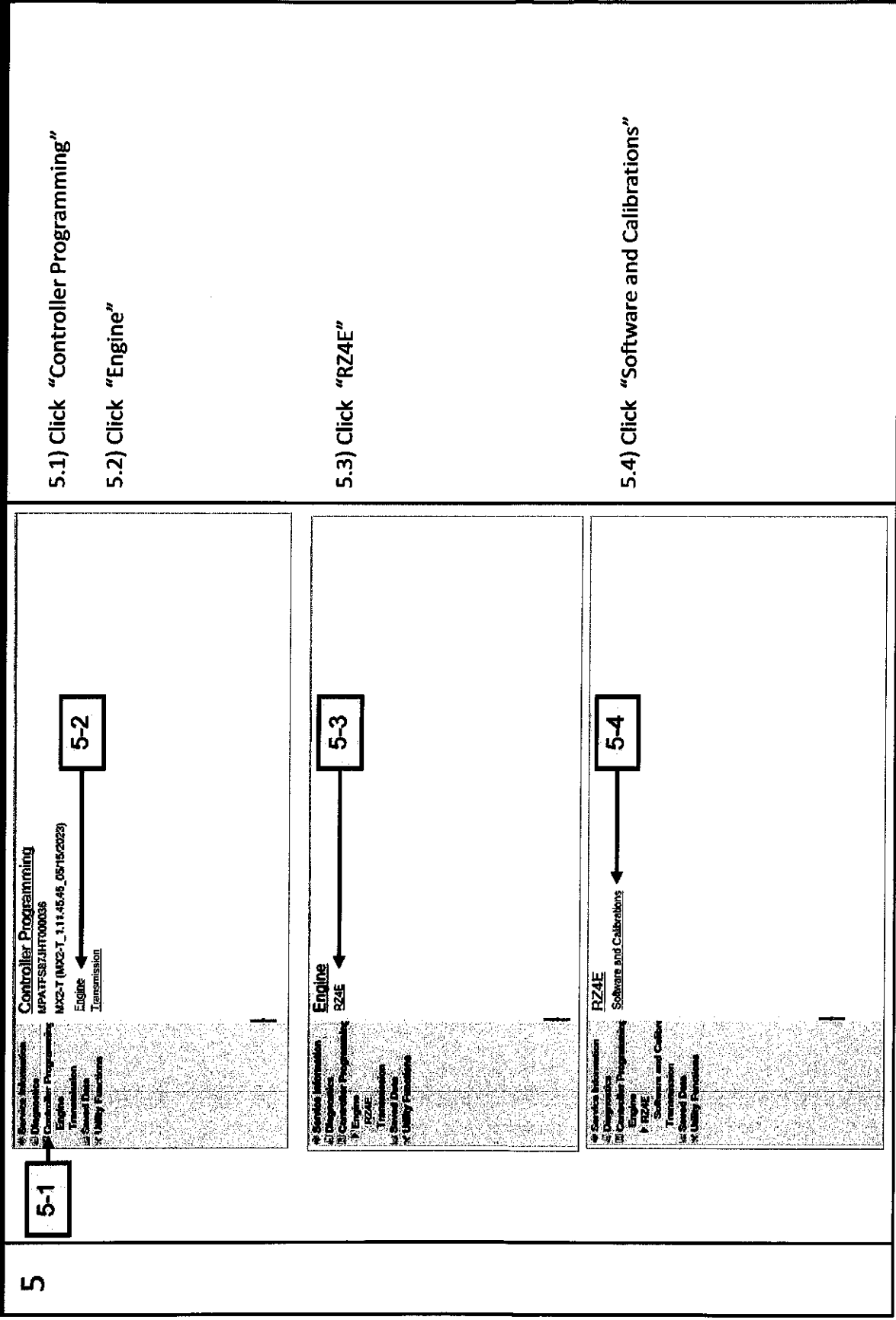
- Following ECM parts numbers are need to update. Please go to next step.

- => 8977908800
- => 8977908810
- => 8977908820
- => 8977908830
- => 8977908890
- => 8977908900

- There is no need to update any other part numbers, please go to step -6-

ECM	ENG		T/M		DRIVE TYPE		SUSPENSION		IMMOBI		C/CONTROL		BOS			
	RZ4E	8LNC	8VQZ	8V6A	TR000	TR500	4X2	4X4	LOW RIDE	HIGH RIDE	W/IMMOBI	W/OIMMOBI	W/CRUISE CONTROL	W/O CRUISE CONTROL	W/BOS	W/O BOS
8977908800	•	•	•	•	•	•	•	•	•	•	•	•	•	•	•	•
8977908810	•	•	•	•	•	•	•	•	•	•	•	•	•	•	•	•
8977908820	•	•	•	•	•	•	•	•	•	•	•	•	•	•	•	•
8977908830	•	•	•	•	•	•	•	•	•	•	•	•	•	•	•	•
8977908890	•	•	•	•	•	•	•	•	•	•	•	•	•	•	•	•
8977908900	•	•	•	•	•	•	•	•	•	•	•	•	•	•	•	•

ECM Software update Procedure



5.1) Click "Controller Programming"

5.2) Click "Engine"

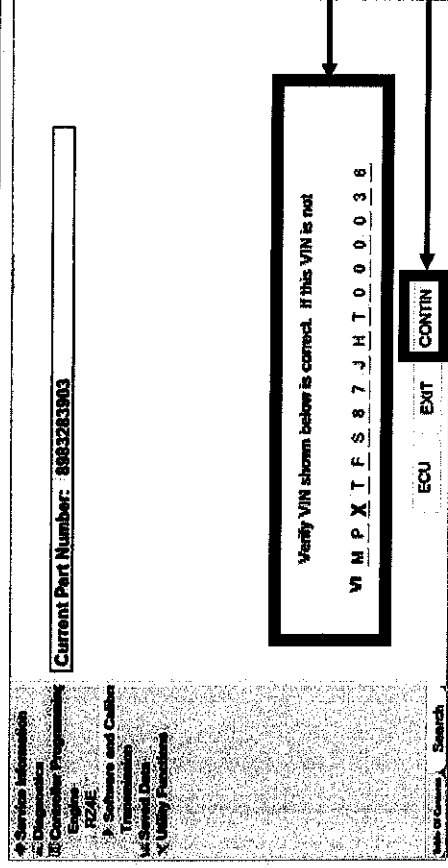
5.3) Click "RZ4E"

5.4) Click "Software and Calibrations"

ECM Software update

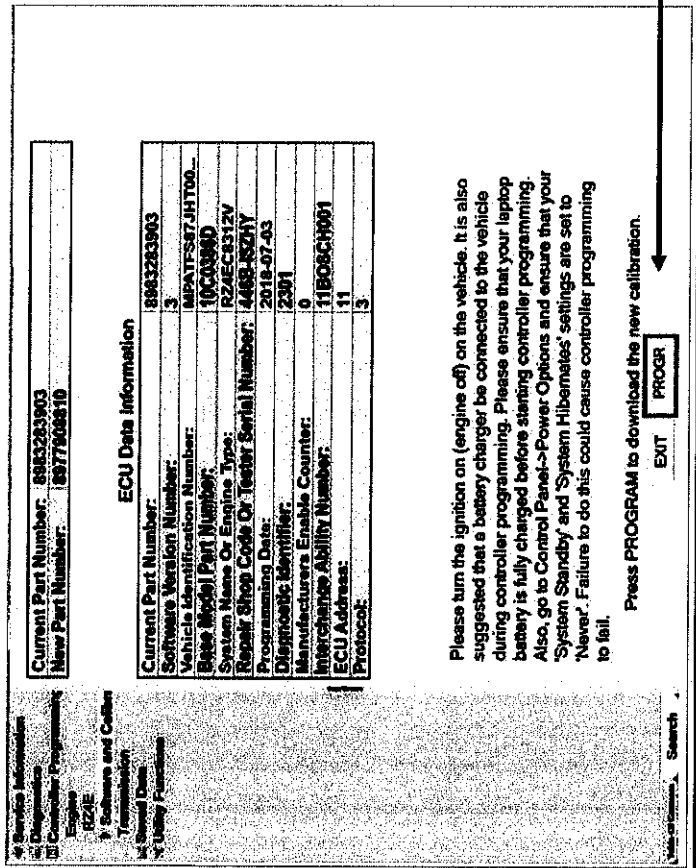
Procedure

5



5.5) Verify VIN shown in the screen is correct.

5.6) Click "CONTINUE" button.



5.7) Click "PROGRAM" button.

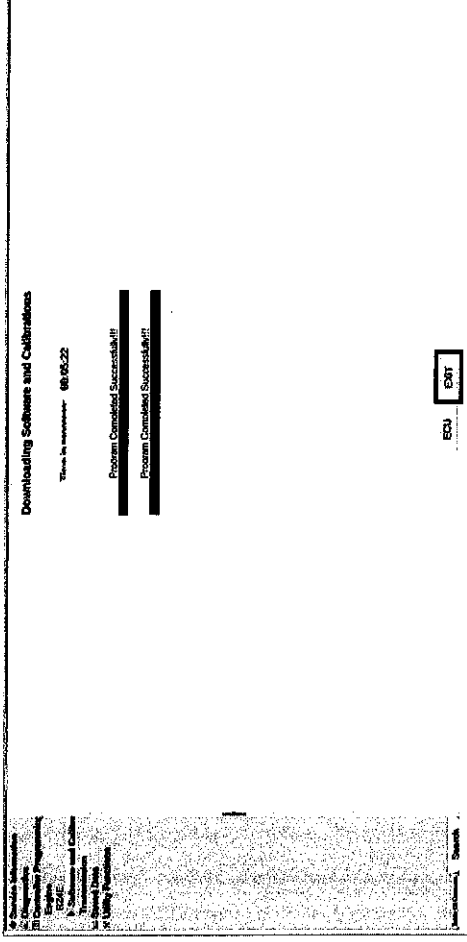
(It takes 10 to 15 minutes to complete the reprogramming.)

\*If the message is "No updates necessary", Click "EXIT" button to end the procedure.

## ECM Software update

## Procedure

5



5.8) Confirm following message is displayed;  
"Program completed successfully!!"

Click "EXIT" button to end the procedure.

